

APPENDIX H – TITLE & DEVELOPMENT PLAN

CERTIFICATE OF TITLE

REAL PROPERTY ACT, 1900



TORRENS TITLE REFERENCE

2/N/2042

EDITION

6

DATE OF ISSUE

28/6/2021

CERTIFICATE AUTHENTICATION CODE

QQGD-9H-FVMJ

I certify that the person described in the First Schedule is the registered proprietor of an estate in fee simple (or such other estate or interest as is set forth in that Schedule) in the land within described subject to such exceptions, encumbrances, interests and entries as appear in the Second Schedule and to any additional entries in the Folio of the Register.

REGISTRAR GENERAL



LAND

LOT 2 OF SECTION N IN DEPOSITED PLAN 2042

AT MOUNT DRUITT.

LOCAL GOVERNMENT AREA: BLACKTOWN.

PARISH OF ROOTY HILL COUNTY OF CUMBERLAND

TITLE DIAGRAM: DP2042

FIRST SCHEDULE

[REDACTED]

(T AR184111)

SECOND SCHEDULE

1. RESERVATIONS AND CONDITIONS IN THE CROWN GRANT(S)

**** END OF CERTIFICATE ****

ANY ATTEMPT TO ALTER THIS CERTIFICATE COULD RESULT IN HEAVY FINES OR IMPRISONMENT (S.141 REAL PROPERTY ACT).

20th March, 1981

D. P. 2042

D. P 2042

1

⑦

37.
(2)

2042
PITTSWOOD
all 36 sec. portions numbered 38 to 43 inclusive
County of Cumberland
not to an Inch



Charles M. Key

- 672.

218153

All sold

A. A. 2042

AMENDMENTS AND/OR ADDITIONS NOTED ON
PLAN IN REGISTRAR GENERAL'S OFFICE.

I, Bruce Richard Davies, Under Secretary for Lands and
Registrar General for New South Wales, certify that this
negative is a photograph made as a permanent record of a
document in my custody this day.

30th March, 1981

2

D.P. 2042

D.P. 2042
RUPERTS

Being subdivision of Charles Pauls 361/2 ac. part

Parish of Rooty Hill - County

Scale 2 Chains to an Inch

MOUNT DRUITT PLATFORM

CHART

WEST

Proposed

George Druitt

1000ac

Town

Temperance

pins

22	19	20	21	22	23	24	25	26	27	28	29	30	31
124	124	124	124	124	124	124	124	124	124	124	124	124	124
124	124	124	124	124	124	124	124	124	124	124	124	124	124
124	124	124	124	124	124	124	124	124	124	124	124	124	124
124	124	124	124	124	124	124	124	124	124	124	124	124	124
124	124	124	124	124	124	124	124	124	124	124	124	124	124
124	124	124	124	124	124	124	124	124	124	124	124	124	124
124	124	124	124	124	124	124	124	124	124	124	124	124	124
124	124	124	124	124	124	124	124	124	124	124	124	124	124
124	124	124	124	124	124	124	124	124	124	124	124	124	124
124	124	124	124	124	124	124	124	124	124	124	124	124	124
124	124	124	124	124	124	124	124	124	124	124	124	124	124
124	124	124	124	124	124	124	124	124	124	124	124	124	124
124	124	124	124	124	124	124	124	124	124	124	124	124	124
124	124	124	124	124	124	124	124	124	124	124	124	124	124
124	124	124	124	124	124	124	124	124	124	124	124	124	124
124	124	124	124	124	124	124	124	124	124	124	124	124	124
124	124	124	124	124	124	124	124	124	124	124	124	124	124
124	124	124	124	124	124	124	124	124	124	124	124	124	124
124	124	124	124	124	124	124	124	124	124	124	124	124	124
124	124	124	124	124	124	124	124	124	124	124	124	124	124
124	124	124	124	124	124	124	124	124	124	124	124	124	124
124	124	124	124	124	124	124	124	124	124	124	124	124	124
124	124	124	124	124	124	124	124	124	124	124	124	124	124
124	124	124	124	124	124	124	124	124	124	124	124	124	124
124	124	124	124	124	124	124	124	124	124	124	124	124	124
124	124	124	124	124	124	124	124	124	124	124	124	124	124
124	124	124	124	124	124	124	124	124	124	124	124	124	124
124	124	124	124	124	124	124	124	124	124	124	124	124	124
124	124	124	124	124	124	124	124	124	124	124	124	124	124
124	124	124	124	124	124	124	124	124	124	124	124	124	124
124	124	124	124	124	124	124	124	124	124	124	124	124	124
124	124	124	124	124	124	124	124	124	124	124	124	124	124
124	124	124	124	124	124	124	124	124	124	124	124	124	124
124	124	124	124	124	124	124	124	124	124	124	124	124	124
124	124	124	124	124	124	124	124	124	124	124	124	124	124
124	124	124	124	124	124	124	124	124	124	124	124	124	124
124	124	124	124	124	124	124	124	124	124	124	124	124	124
124	124	124	124	124	124	124	124	124	124	124	124	124	124
124	124	124	124	124	124	124	124	124	124	124	124	124	124
124	124	124	124	124	124	124	124	124	124	124	124	124	124
124	124	124	124	124	124	124	124	124	124	124	124	124	124
124	124	124	124	124	124	124	124	124	124	124	124	124	124
124	124	124	124	124	124	124	124	124	124	124	124	124	124
124	124	124	124	124	124	124	124	124	124	124	124	124	124
124	124	124	124	124	124	124	124	124	124	124	124	124	124
124	124	124	124	124	124	124	124	124	124	124	124	124	124
124	124	124	124	124	124	124	124	124	124	124	124	124	124
124	124	124	124	124	124	124	124	124	124	124	124	124	124
124	124	124	124	124	124	124	124	124	124	124	124	124	124
124	124	124	124	124	124	124	124	124	124	124	124	124	124
124	124	124	124	124	124	124	124	124	124	124	124	124	124
124	124	124	124	124	124	124	124	124	124	124	124	124	124
124	124	124	124	124	124	124	124	124	124	124	124	124	124
124	124	124	124	124	124	124	124	124	124	124	124	124	124
124	124	124	124	124	124	124	124	124	124	124	124	124	124
124	124	124	124	124	124	124	124	124	124	124	124	124	124
124	124	124	124	124	124	124	124	124	124	124	124	124	124
124	124	124	124	124	124	124	124	124	124	124	124	124	124
124	124	124	124	124	124	124	124	124	124	124	124	124	124
124	124	124	124	124	124	124	124	124	124	124	124	124	124
124	124	124	124	124	124	124	124	124	124	124	124	124	124
124	124	124	124	124	124	124	124	124	124	124	124	124	124
124	124	124	124	124	124	124	124	124	124	124	124	124	124
124	124	124	124	124	124	124	124	124	124	124	124	124	124
124	124	124	124	124	124	124	124	124	124	124	124	124	124
124	124	124	124	124	124	124	124	124	124	124	124	124	124
124	124	124	124	124	124	124	124	124	124	124	124	124	124
124	124	124	124	124	124	124	124	124	124	124	124	124	124
124	124	124	124	124	124	124	124	124	124	124	124	124	124
124	124	124	124	124	124	124	124	124	124	124	124	124	124
124	124	124	124	124	124	124	12						

Charles M. Kay

6720

D.P. 2042

All sold

Estate

Hill

Rooley

Along the inner length of this boundary a Reserve 10 feet wide may be taken

100 ft

To Sydney

R. Brock L.S.

10th March 1992

D.P. 2042

AMENDMENTS AND/OR ADDITIONS NOTED ON
P.L.A. 776/STAR GENERAL'S OFFICE.

I, Bruce Richard Davies, Under Secretary for Lands and
Registrar General for New South Wales, certify that this
negative is a photograph made as a permanent record of a
document in my custody this day.

Ref:R788166 /Doc:DP 0002042 P /Rev:23-Jul-1992 /Sts:OK,OK /Prt:26-Nov-2015 14:50 /Pgs:MLL /Seq:6 of 9d

Ref: R788166 / Doc: D1

DP 2042

PARISH OF ROOTY HILL = COUNTY
RUPERTS

BEING SUBDIVISION OF CHARLES PAULLS, 361 1/2 ACRES- PARTIAL

TITLE, TORRENS' ACT

Grant to Charles Hull 26th September 1873

G R E A T W E S T E R N

MOUNT DRUITT  PLATFORM

PROPOSED ☐

~~B~~ ~~E~~ ~~A~~ ~~M~~ ~~F~~ ~~C~~

George Drvitt

1000cc

MEMPERANCE TOWN

ALL SOLD
Plan

1128

UDH
D.P. 2042

T E D T C

W E H L O W

C A L L A C H E R

T I D S W E L L

30 F U L L E R

M I L L E R

PARK ST.

AMENDMENTS AND/OR ADDITIONS NOTED ON
PLAN IN REGISTRAR GENERAL'S OFFICE.

I, Bruce Richard Davies, Under Secretary for Lands and
Registrar General for New South Wales, certify that this
negative is a photograph made as a permanent record of a
document in my custody this day.
30th March, 1961

6

DP 2042

COUNTY OF CUMBERLAND

RTSWOOD

2042

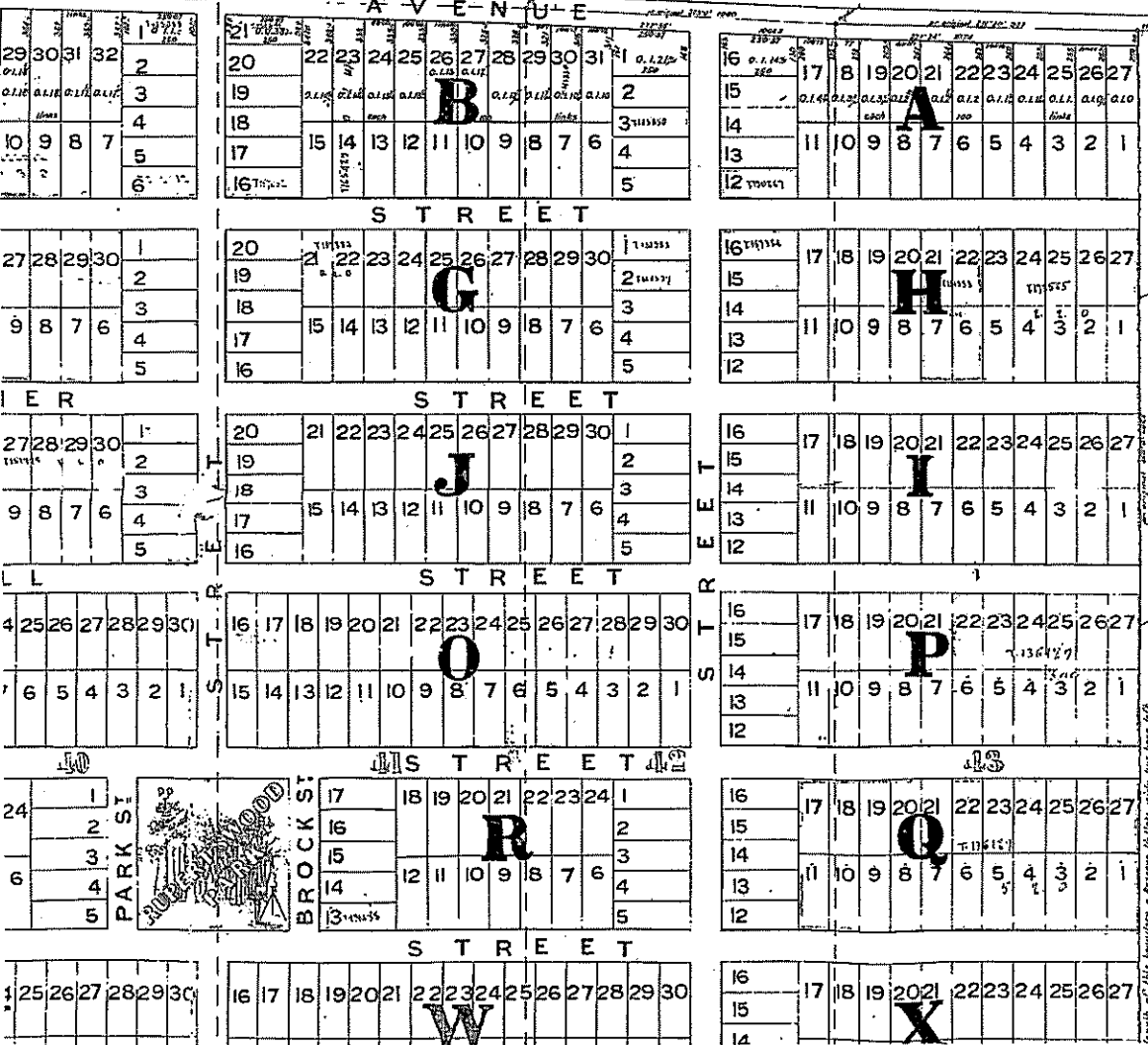
PAULS 361/4 ACRES - PORTIONS NUMBERED 38 TO 43 INCLUSIVE

ACT 1077 LOTS

6th September 1872
Vol. 726/10-152
STANDARD PREPARED

A
This map is a copy of the original
map of the land of the
late Richard Davies, and is
made from the original
map of the land of the
late Richard Davies.

S T E R N R A I L W A Y
PROPOSED STATION TO SYDNEY



Charles M. Roy

57 ac

ALL ESTATE

ALL SOLD

DP 2042

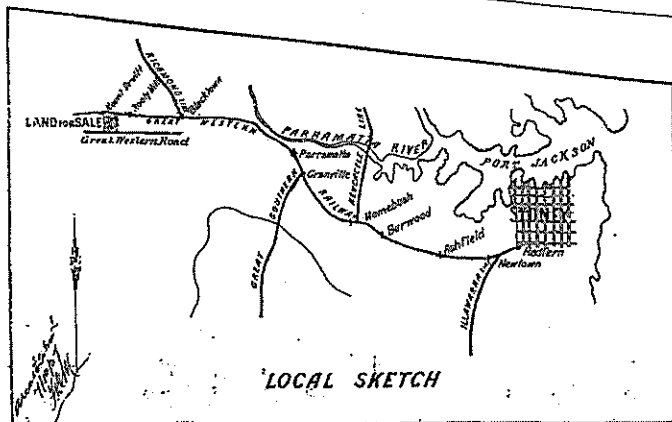
863

AD 11042

ALL SOLD
Plan

Deposited

FROM PENRITH

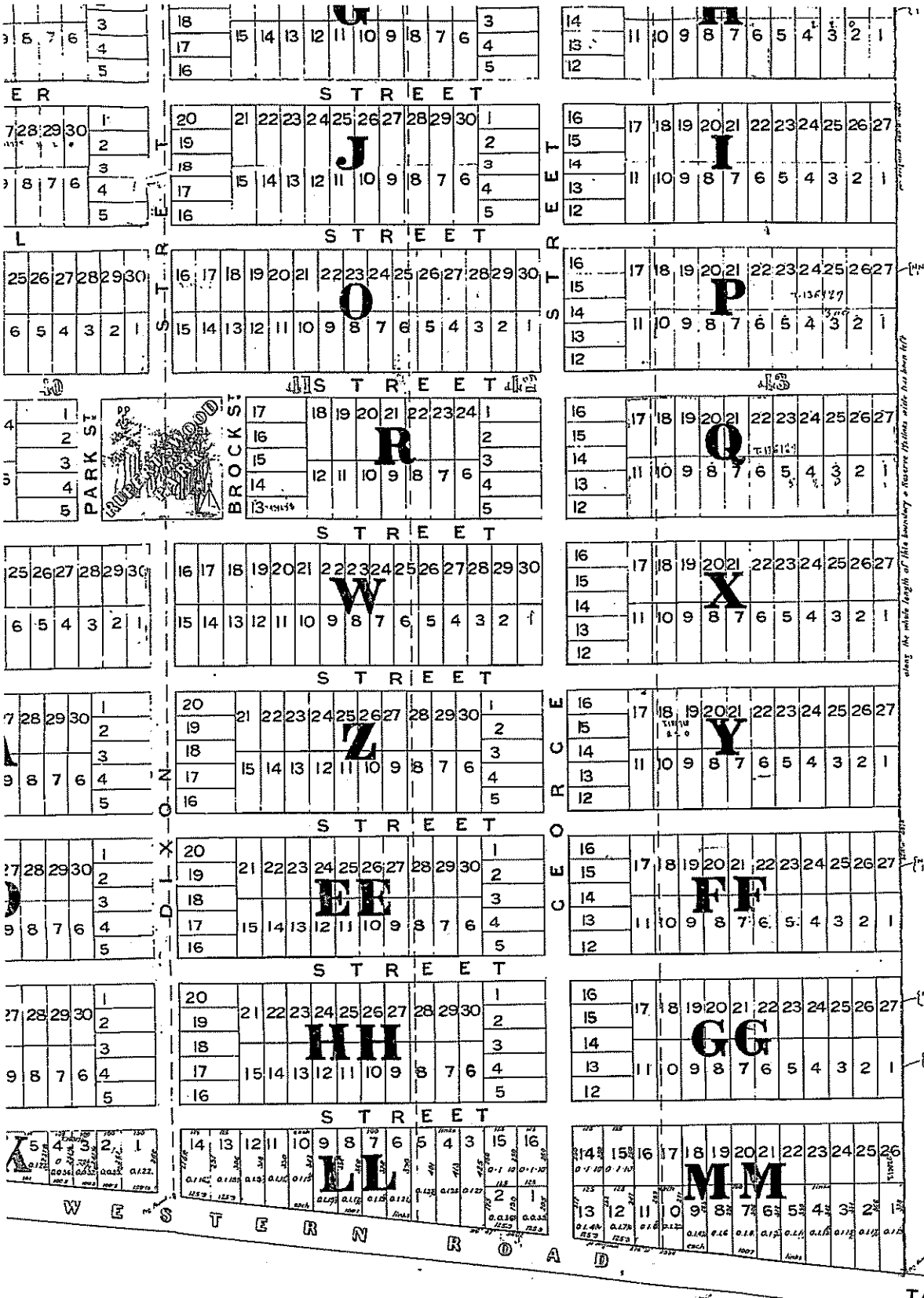


G R E A T W E S

Notes:

EACH LOT NOT OTHERWISE SHOWN ON PLAN MEASURES 250x100 LINKS
AND CONTAINS 1/4 OF AN ACRE
ALL DISTANCES GIVEN IN LINKS
ALL STREETS ONE CHAIN WIDE AND CLEARED
SCALE 2 CHAINS TO AN INCH

DP 2042



Check M. Kay

67 ac

DP 2042

869

Plan

Deposited

ROOTY HILL ESTATE

ALL SOLD

1 IN PLAN MEASURES 250x100 LINKS
16
LINKS
AND CLEARED

I hereby certify that this Plan is correct & sufficient
for the purposes of the Real Property Act
Signed 16 March 1885.

Mr. Broad
Proved Surveyor under the Real Property Act

DP 2042

No.	Loc.	Spec.	Particulars
(1)	26	B	35M2204 Quarry as to Dead.
(2)	14	B	D 351555 - See P.P. 357419
(3)	13-14	J	M 351555-90850 - See P.P. 3590820
(4)	34-35	J	G 351555-90850 - See P.P. 3590820
(5)	34-35	J	G 351555-90850 - See P.P. 3590820
(6)	4-4.5	F	5906237001 - See P.P. 5906237001
(7)	5-5.1	F	M 351555-90850 - See P.P. 3590820
(8)	13-14	J	" 101459 - See P.P. 101459
(9)	22-23	J	" 101459 - See P.P. 101459
(10)	18-19	J	M 351555-90850 - See P.P. 3590820
(11)	18-19	J	" 101459 - See P.P. 101459
(12)	18-19	J	" 101459 - See P.P. 101459
(13)	18-19	J	" 101459 - See P.P. 101459
(14)	18-19	J	" 101459 - See P.P. 101459
(15)	18-19	J	" 101459 - See P.P. 101459
(16)	18-19	J	" 101459 - See P.P. 101459
(17)	18-19	J	" 101459 - See P.P. 101459
(18)	18-19	J	" 101459 - See P.P. 101459
(19)	18-19	J	" 101459 - See P.P. 101459
(20)	18-19	J	" 101459 - See P.P. 101459
(21)	18-19	J	" 101459 - See P.P. 101459
(22)	18-19	J	" 101459 - See P.P. 101459
(23)	18-19	J	" 101459 - See P.P. 101459
(24)	18-19	J	" 101459 - See P.P. 101459
(25)	18-19	J	" 101459 - See P.P. 101459
(26)	18-19	J	" 101459 - See P.P. 101459
(27)	18-19	J	" 101459 - See P.P. 101459
(28)	18-19	J	" 101459 - See P.P. 101459
(29)	18-19	J	" 101459 - See P.P. 101459
(30)	18-19	J	" 101459 - See P.P. 101459
(31)	18-19	J	" 101459 - See P.P. 101459
(32)	18-19	J	" 101459 - See P.P. 101459
(33)	18-19	J	" 101459 - See P.P. 101459
(34)	18-19	J	" 101459 - See P.P. 101459
(35)	18-19	J	" 101459 - See P.P. 101459
(36)	18-19	J	" 101459 - See P.P. 101459
(37)	18-19	J	" 101459 - See P.P. 101459
(38)	18-19	J	" 101459 - See P.P. 101459
(39)	18-19	J	" 101459 - See P.P. 101459
(40)	18-19	J	" 101459 - See P.P. 101459
(41)	18-19	J	" 101459 - See P.P. 101459
(42)	18-19	J	" 101459 - See P.P. 101459
(43)	18-19	J	" 101459 - See P.P. 101459
(44)	18-19	J	" 101459 - See P.P. 101459
(45)	18-19	J	" 101459 - See P.P. 101459
(46)	18-19	J	" 101459 - See P.P. 101459
(47)	18-19	J	" 101459 - See P.P. 101459
(48)	18-19	J	" 101459 - See P.P. 101459
(49)	18-19	J	" 101459 - See P.P. 101459
(50)	18-19	J	" 101459 - See P.P. 101459

D. P. 2042

DP 2012	REGISTRAR GENERAL'S DEPARTMENT	CONVERSION TANE ADDED IN	LINKS	METRES
			1.5	0.3
			13.75	3.17
			20.1	4.045
			28.2	5.625
			27.2	5.47
			28	5.635
			32	6.435
			39	7.685
			50	10.06
			61.25	12.32
			64.25	12.925
			66	13.46
			71	14.285
			73.75	14.635
			74.75	15.035
			75.4	15.37
			77	15.49
			77.5	15.59
			80.1	16.115
			92.25	16.755
			95.6	19.675
			100	20.115
			100.03	20.135
			100.15	20.195
			100.42	20.2
			100.5	20.215
			100.7	20.26
			101.2	20.36
			101.2	21.565
			110	22.75
			115	24.34
			121	24.565
			123.6	24.945
			124	25.145
			125	25.265
			125.6	25.325
			125.9	25.5
			126.75	25.5
			128	25.75
			130	26.13
			131.2	26.195
			133.5	26.855
			134.5	27.055
			137.2	27.61
			137.23	27.61
			139.6	28.085
			140.88	28.215
			141.25	28.15
			141.5	28.465
			142.5	28.75
			144	29.37
			145.6	29.57
			147	29.97
			148	29.775
			150	30.475
			150.75	30.325
			152.5	30.48
			154.75	31.3
			157.5	31.685
			159.25	32.535
			161.25	33.24
			162.25	33.7
			162.65	33.7
			175	35.205
			162	36.61
			168.75	37.97
			180	38.22
			186	39.43
			200	40.235
			201	40.435
			201.75	40.565
			203	41.695
			206.25	

LINKS	CONVERSION FARE ADDED IN SECURITIES/STOCKS/RETIRED		RETIRES
	OP 2012	CURTIED	
217	43.695		43.695
221.5	44.56		44.56
231.25	46.52		46.52
242	48.67		48.67
247.25	49.65		49.65
256	50.29		50.29
250.07	50.31		50.31
250.37	50.37		50.37
251	50.49		50.49
251.28	50.54		50.54
252.5	50.79		50.79
259	51.5		51.5
259.4	51.8		51.8
259	52.3		52.3
260	52.3		52.3
262.2	52.75		52.75
264.6	53.23		53.23
266	53.51		53.51
267	53.71		53.71
269.5	54.21		54.21
271	54.52		54.52
272	54.72		54.72
274	55.42		55.42
276.5	56.3		56.3
280	56.93		56.93
283	57.54		57.54
291	58.54		58.54
294	59.14		59.14
305.5	61.42		61.42
306.5	61.56		61.56
311	62.56		62.56
313	63.37		63.37
315	63.97		63.97
316	64.11		64.11
318.8	64.57		64.57
321	65.03		65.03
323.25	65.98		65.98
326	66.06		66.06
328.4	66.39		66.39
330	66.59		66.59
330.8	67.03		67.03
332.2	67.54		67.54
335.25	67.98		67.98
337.5	68.48		68.48
338	68.8		68.8
340.4	69.4		69.4
342	70.1		70.1
342.8	70.6		70.6
343	71.21		71.21
345	71.41		71.41
355	71.96		71.96
357.2	72.54		72.54
359.6	73.11		73.11
364.4	73.63		73.63
366	73.79		73.79
366.8	74.77		74.77
369.2	75.75		75.75
371.6	76.2		76.2
374	76.94		76.94
374.5	77.34		77.34
376.4	77.93		77.93
378	78.56		78.56
378.8	79.31		79.31
384.5	79.31		79.31
390	79.31		79.31
394.25	80.06		80.06
395.6	80.55		80.55
398	80.67		80.67
400.4	81.02		81.02
401	81.32		81.32
402.8	81.51		81.51
404.25	82		82
405.2			
407.6			

CONVERSION TABLE ADDED IN REGISTER GENERAL DEPARTMENT OF 2012 CONTINUED			
AC	RO	P	50 H
-	1 16	1414	
-	1 16 1/4	1423	
-	1 16 3/4	1435	
-	1 17	1442	
-	1 17 1/4	1446	
-	1 17 1/2	1454	
-	1 18	1467	
-	1 18 1/2	1480	
-	1 18 3/4	1492	
-	1 19	1499	
-	1 19 1/2	1505	
-	1 20	1510	
-	1 20 1/4	1524	
-	1 20 1/2	1530	
-	1 20 3/4	1537	
-	1 21	1549	
-	1 21 1/4	1559	
-	1 21 3/4	1564	
-	1 22	1578	
-	1 22 1/4	1578	
-	1 23 1/4	1600	
-	1 23 1/2	1612	
-	1 23 3/4	1619	
-	1 24	1624	
-	1 24 1/2	1624	
-	1 24 1/4	1625	
-	1 24 1/2	1631	
-	1 25	1644	
-	1 25 1/4	1650	
-	1 25 3/4	1653	
-	1 26	1669	
-	1 26 1/2	1688	
-	1 26 3/4	1695	
-	1 27	1701	
-	1 27 1/2	1707	
-	1 28 1/2	1733	
-	1 30 1/4	1777	

CONVERSION TABLE ADDED IN REGISTER GENERAL'S DEPARTMENT	
TOP 20% CUMULATIVE	MEINES
LINKS	MEINES
410	62.48
411	62.96
412	63.06
413	63.28
414	63.44
415	63.55
416	64.15
417	64.15
418	64.15
419	64.15
420	64.15
421	64.15
422	64.15
423	65.5
424	65.5
425	65.5
426	65.5
427	65.5
428	65.5
429	65.5
430	65.5
431	65.5
432	65.5
433	65.5
434	65.5
435	65.5
436	65.5
437	65.5
438	65.5
439	65.5
440	65.5
441	65.5
442	65.5
443	65.5
444	65.5
445	65.5
446	65.5
447	65.5
448	65.5
449	65.5
450	65.5
451	65.5
452	65.5
453	65.5
454	65.5
455	65.5
456	65.5
457	65.5
458	65.5
459	65.5
460	65.5
461	65.5
462	65.5
463	65.5
464	65.5
465	65.5
466	65.5
467	65.5
468	65.5
469	65.5
470	65.5
471	65.5
472	65.5
473	65.5
474	65.5
475	65.5
476	65.5
477	65.5
478	65.5
479	65.5
480	65.5
481	65.5
482	65.5
483	65.5
484	65.5
485	65.5
486	65.5
487	65.5
488	65.5
489	65.5
490	65.5
491	65.5
492	65.5
493	65.5
494	65.5
495	65.5
496	65.5
497	65.5
498	65.5
499	65.5
500	65.5
501	65.5
502	65.5
503	65.5
504	65.5
505	65.5
506	65.5
507	65.5
508	65.5
509	65.5
510	65.5
511	65.5
512	65.5
513	65.5
514	65.5
515	65.5
516	65.5
517	65.5
518	65.5
519	65.5
520	65.5
521	65.5
522	65.5
523	65.5
524	65.5
525	65.5
526	65.5
527	65.5
528	65.5
529	65.5
530	65.5
531	65.5
532	65.5
533	65.5
534	65.5
535	65.5
536	65.5
537	65.5
538	65.5
539	65.5
540	65.5
541	65.5
542	65.5
543	65.5
544	65.5
545	65.5
546	65.5
547	65.5
548	65.5
549	65.5
550	65.5
551	65.5
552	65.5
553	65.5
554	65.5
555	65.5
556	65.5
557	65.5
558	65.5
559	65.5
560	65.5
561	65.5
562	65.5
563	65.5
564	65.5
565	65.5
566	65.5
567	65.5
568	65.5
569	65.5
570	65.5
571	65.5
572	65.5
573	65.5
574	65.5
575	65.5
576	65.5
577	65.5
578	65.5
579	65.5
580	65.5
581	65.5
582	65.5
583	65.5
584	65.5
585	65.5
586	65.5
587	65.5
588	65.5
589	65.5
590	65.5
591	65.5
592	65.5
593	65.5
594	65.5
595	65.5
596	65.5
597	65.5
598	65.5
599	65.5
600	65.5
601	65.5
602	65.5
603	65.5
604	65.5
605	65.5
606	65.5
607	65.5
608	65.5
609	65.5
610	65.5
611	65.5
612	65.5
613	65.5
614	65.5
615	65.5
616	65.5
617	65.5
618	65.5
619	65.5
620	65.5
621	65.5
622	65.5
623	65.5
624	65.5
625	65.5
626	65.5
627	65.5
628	65.5
629	65.5
630	65.5
631	65.5
632	65.5
633	65.5
634	65.5
635	65.5
636	65.5
637	65.5
638	65.5
639	65.5
640	65.5
641	65.5
642	65.5
643	65.5
644	65.5
645	65.5
646	65.5
647	65.5
648	65.5
649	65.5
650	65.5
651	65.5
652	65.5
653	65.5
654	65.5
655	65.5
656	65.5
657	65.5
658	65.5
659	65.5
660	65.5
661	65.5
662	65.5
663	65.5
664	65.5
665	65.5
666	65.5
667	65.5
668	65.5
669	65.5
670	65.5
671	65.5
672	65.5
673	65.5
674	65.5
675	65.5
676	65.5
677	65.5
678	65.5
679	65.5
680	65.5
681	65.5
682	65.5
683	65.5
684	65.5
685	65.5
686	65.5
687	65.5
688	65.5
689	65.5
690	65.5
691	65.5
692	65.5
693	65.5
694	65.5
695	65.5
696	65.5
697	65.5
698	65.5
699	65.5
700	65.5
701	65.5
702	65.5
703	65.5
704	65.5
705	65.5
706	65.5
707	65.5
708	65.5
709	65.5
710	65.5
711	65.5
712	65.5
713	65.5
714	65.5
715	65.5
716	65.5
717	65.5
718	65.5
719	65.5
720	65.5
721	65.5
722	65.5
723	65.5
724	65.5
725	65.5
726	65.5
727	65.5
728	65.5
729	65.5
730	65.5
731	65.5
732	65.5
733	65.5
734	65.5
735	65.5
736	65.5
737	65.5
738	65.5
739	65.5
740	65.5
741	65.5
742	65.5
743	65.5
744	65.5
745	65.5
746	65.5
747	65.5
748	65.5
749	65.5
750	65.5
751	65.5
752	65.5
753	65.5
754	65.5
755	65.5
756	65.5
757	65.5
758	65.5
759	65.5
760	65.5
761	65.5
762	65.5
763	65.5
764	65.5
765	65.5
766	65.5
767	65.5
768	65.5
769	65.5
770	65.5
771	65.5
772	65.5
773	65.5
774	65.5
775	65.5
776	65.5
777	65.5
778	65.5
779	65.5
780	65.5
781	65.5
782	65.5
783	65.5
784	65.5
785	65.5
786	65.5
787	65.5
788	65.5
789	65.5
790	65.5
791	65.5
792	65.5
793	65.5
794	65.5
795	65.5
796	65.5
797	65.5
798	65.5
799	65.5
800	65.5
801	65.5
802	65.5
803	65.5
804	65.5
805	65.5
806	65.5
807	65.5
808	65.5
809	65.5
810	65.5
811	65.5
812	65.5
813	65.5
814	65.5
815	65.5
816	65.5
817	65.5
818	65.5
819	65.5
820	65.5
821	65.5
822	65.5
823	65.5
824	65.5
825	65.5
826	65.5
827	65.5
828	65.5
829	65.5
830	65.5
831	65.5
832	65.5
833	65.5
834	65.5
835	65.5
836	65.5
837	65.5
838	65.5
839	65.5
840	65.5
841	65.5
842	65.5
843	65.5
844	65.5
845	65.5
846	65.5
847	65.5
848	65.5
849	65.5
850	65.5
851	65.5
852	65.5
853	65.5
854	65.5
855	65.5
856	65.5
857	65.5
858	65.5
859	65.5
860	65.5
861	65.5
862	65.5
863	65.5
864	65.5
865	65.5
866	65.5
867	65.5
868	65.5
869	65.5
870	65.5
871	65.5
872	65.5
873	65.5
874	65.5
875	65.5
876	65.5
877	65.5
878	65.5
879	65.5
880	65.5
881	65.5
882	65.5
883	65.5
884	65.5
885	65.5
886	65.5
887	65.5
888	65.5
889	65.5
890	65.5
891	65.5
892	65.5
893	65.5
894	65.5
895	65.5
896	65.5
897	65.5
898	65.5
899	65.5
900	65.5
901	65.5
902	65.5
903	65.5
904	65.5
905	65.5
906	65.5
907	65.5
908	65.5
909	65.5
910	65.5
911	65.5
912	65.5
913	65.5
914	65.5
915	65.5
916	65.5
917	65.5
918	65.5
919	65.5
920	65.5
921	65.5
922	65.5
923	65.5
924	65.5
925	65.5
926	65.5
927	65.5
928	65.5
929	65.5
930	65.5
931	65.5
932	65.5
933	65.5
934	65.5
935	65.5
936	65.5
937	65.5
938	65.5
939	65.5
940	65.5
941	65.5
942	65.5
943	65.5
944	65.5
945	65.5
946	65.5
947	65.5
948	65.5
949	65.5
950	65.5
951	65.5
952	65.5
953	65.5
954	65.5
955	65.5
956	65.5
957	65.5
958	65.5
959	65.5
960	65.5
961	65.5
962	65.5
963	65.5
964	65.5
965	65.5
966	65.5
967	65.5
968	65.5
969	65.5
970	65.5
971	65.5
972	65.5
973	65.5
974	65.5
975	65.5
976	65.5
977	65.5
978	65.5
979	65.5
980	65.5
981	65.5
982	65.5
983	65.5
984	65.5
985	65.5
986	65.5
987	65.5
988	65.5
989	65.5
990	65.5
991	65.5
992	65.5
993	65.5
994	65.5
995	65.5

AMENDMENTS AND/OR ADDITIONS NOTED ON
PLAN IN REGISTRAR GENERAL'S OFFICE.

I, Bruce Richard Davies, Under Secretary for Lands and Registrar General for New South Wales, certify that this photograph is a photograph made as a permanent record of a document in my custody this day.

30th March, 1981